



## TECHNICAL GUIDE FOR THE BUILDING SITE

### FLOOR AND COVERING FIXING SYSTEMS VITRIFIED TILES, MOSAICS AND NATURAL STONE

TILES & STONE  
**C**  
SYSTEMS



Together with nature we  
can build the future.

**KERA****KOLL**  
The GreenBuilding Company



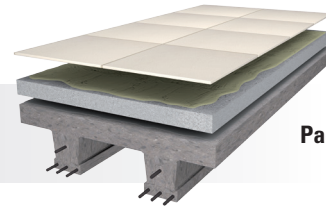


# VITRIFIED TILES AND NATURAL STONE FIXING SYSTEMS



SYSTEM  
**C1**  
TILES

FIXING VITRIFIED TILES WITH  
THE WET-ON-WET TECHNIQUE

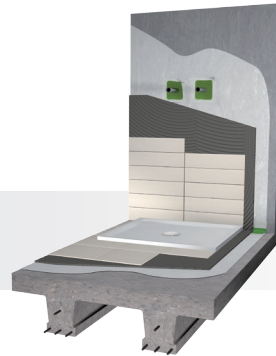


Page 08



SYSTEM  
**C2**  
TILES

VITRIFIED TILES FIXING  
IN WET AREAS AND  
SHOWERS



Page 10

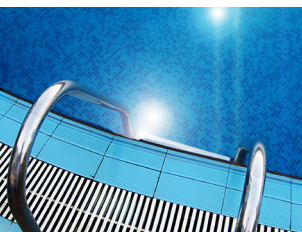


SYSTEM  
**C3**  
TILES

VITRIFIED TILES FIXING ON  
TERRACES AND BALCONIES



Page 12



SYSTEM  
**C4**  
TILES

VITRIFIED TILES AND  
MOSAIC FIXING IN  
SWIMMING POOL

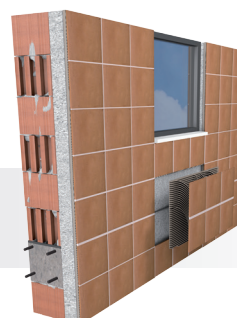


Page 14



SYSTEM  
**C5**  
TILES

VITRIFIED TILES FIXING ON  
EXTERNAL FACADES

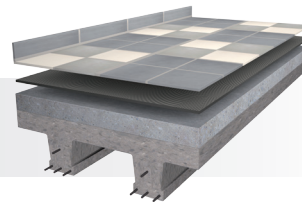


Page 16



SYSTEM  
**C6**  
TILES

VITRIFIED TILES FIXING  
IN AREAS WITH HEAVY  
TRAFFIC

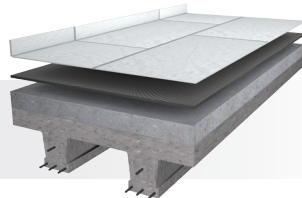


Page 18



SYSTEM  
**C7**  
TILES

FIXING OF THIN AND LARGE  
SIZE VITRIFIED TILES

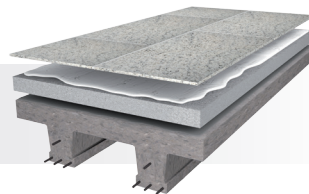


Page 20



SYSTEM  
**C8**  
STONE

FIXING NATURAL INDIAN  
STONE WITH THE  
WET-ON-WET TECHNIQUE



Page 22



SYSTEM  
**C9**  
STONE

NATURAL STONE FIXING  
ON EXTERNAL FACADES

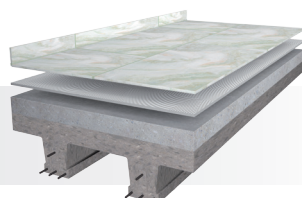


Page 24



SYSTEM  
**C10**  
STONE

FIXING OF ITALIAN STONE  
ON FLOOR



Page 26

# STANDARDS, REGULATIONS, CERTIFICATES AND LABELLING

## EUROPEAN STANDARDS AND REGULATIONS

**EN standards** are technical specifications adopted by CEN, the European Committee for Standardisation, which defines the requirements of a product. When harmonised, they are used for compliance assessment, classification and compulsory CE marking of products.

**EU regulations** are binding legal documents that must be applied in all parts, throughout the European Union, to apply these standards.

**CE directives** are legal documents that establish a goal that all EU countries have to implement and put into practice.

Examples of harmonised standards mentioned in the guide are:

**EN 12004:** adhesive for ceramic tiles

**EN 13813:** substrate preparation coats

**EN 14891:** waterproofing products applied as liquids, for use under ceramic tiles applied using adhesives

### CLASSIFICATION OF TILE ADHESIVES UNDER EN 12004

CEMENT-BASED ADHESIVES (C)	
Basic class	Complementary/additional characteristics
<b>C1</b>	E: EXTENDED OPEN TIME T: REDUCED VERTICAL SLIP S1: DEFORMABILITY S2: HIGH DEFORMATION
<b>C2</b>	
<b>C2F</b>	
DISPERSED ADHESIVES (D)	
Basic class	Complementary/additional characteristics
<b>D1</b>	E: EXTENDED OPEN TIME T: REDUCED VERTICAL SLIP
<b>D2</b>	
REACTIVE ADHESIVES (R)	
Basic class	Complementary/additional characteristics
<b>R1</b>	T: REDUCED VERTICAL SLIP
<b>R2</b>	

Examples of NON harmonised standards mentioned in the guide:

**EN 13888:** grouts for ceramic tiles

**EN 14293:** adhesives for fixing of solid wood flooring to the ground

**EN 14259:** adhesives for resilient material and textile coverings

### CLASSIFICATION OF CERAMIC GROUTS UNDER EN 13888

CEMENT-BASED GROUTS		
Type	Class	Complementary/additional characteristics
<b>CG</b>	<b>1 (normal)</b>	F: RAPID
	<b>2 (improved)</b>	F: RAPID W: REDUCED WATER ABSORPTION A: HIGH RESISTANCE TO ABRASION
REACTIVE GROUTS		
Type	Class	Complementary/additional characteristics
<b>RG</b>		

## NATIONAL STANDARDS AND REGULATIONS

Every country has national technical standards, technical rules, codes of practice, regulations, etc... that need to be assessed before using the options proposed.

Examples of this may be:

**BSI** for Great Britain, **DIN** for Germany, **CSTB** for France, **UNI** for Italy, **IS** for India, **ANSI** for the USA, etc...

## GEV-EMICODE CERTIFICATION

The EMICODE® classification system issued by GEV (the German Association controlling volatile organic compound emissions) defines products according to the quantity of VOC emitted.



## STANDARDS AND REGULATIONS IN USE IN INDIA

The **IS 15477** standard has been adopted by the Bureau of Indian Standards, after the final approval of the draft issued by the plastic materials division commission on behalf of the Petroleum, Coal, and Related Products Department.

The standard methods of measuring the characteristics are an essential addition to the technical specifications of the tile adhesives.

The **IS 15477** standard proposes to determine these methods according to the characteristics of the tiles and the environmental conditions.

**TYPE 1** Suitability for fixing tiles with > 3% porosity

**TYPE 2** suitability for fixing tiles with < 3% porosity

### CLASSIFICATION OF TILE ADHESIVES UNDER IS 15477

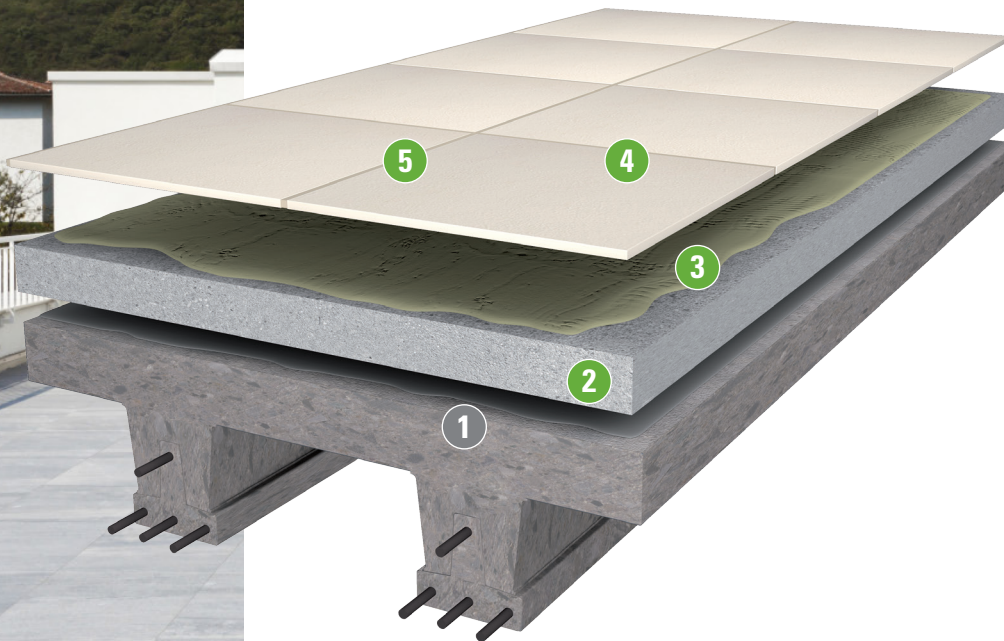
KEY CHARACTERISTICS	TYPE 1	TYPE 2
Tensile adhesion (minimum)		
<b>Dry condition</b>	750 N	—
<b>Humid condition</b>	450 N	—
Shear adhesion (minimum)		
<b>Dry condition after 24 hrs</b>	2.50 KN	4.00 KN
<b>Dry condition after 14 days</b>	8.00 KN	10.00 KN
<b>Adhesion after heat ageing</b>	4.00 KN	5.00 KN
<b>Humid condition</b>	4.00 KN	5.00 KN

For tropical countries such as India, the standard temperature and the relative humidity are  $+27 \pm 2^\circ\text{C}$  and  $65 \pm 5\%$ .

## FIXING VITRIFIED TILES WITH THE WET-ON-WET TECHNIQUE



- Guarantees safe fixing and certified high strength performances
- No stains on the surface
- Avoids moisture rising on the walls
- High dimensional stability and durability
- Fast completion of work
- System with very low VOC emissions, improves the quality of air and increases the level of health protection for people





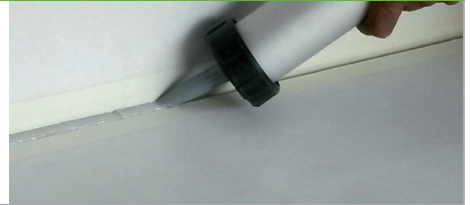
## EXPANSION JOINTS

Coverage  
see coverage table  
on page 36



### Fugabella® Eco Silicone

Eco-friendly, silicone, acetic, anti-mould organic sealant with a high level of elasticity for expansion-deformation joints, ideal for use in GreenBuilding. Solvent-free, safeguards the health of both operators and the environment.



## GROUTING

Coverage  
see coverage table  
on page 36



### Fugabella® Eco Porcelana 0-5

Certified, eco-friendly, naturally bacteriostatic and fungistatic, stabilized mineral grout containing pure natural NHL 5 lime for extremely colour-fast joints from 0 mm to 5 mm in thickness, ideal for use in GreenBuilding. Single-component with very low volatile organic compound emissions, contains recycled raw materials. Recyclable as an inert material at the end of its life.



## VITRIFIED TILES FIXING

Coverage  
≈ 1,2 kg/m<sup>2</sup> per mm of  
thickness



### Biotack Grey

Mineral slurry adhesive to fix vitrified tiles and natural stones of all types and formats on floor using the wet-on-wet technique.



## SUBSTRATE

Preparation of the screed  
≈ 1,2 kg/m<sup>2</sup>  
per cm of thickness



### Biocem + Quartzo

Mineral binder for screeds to fix vitrified tiles and natural stones using wet-on-wet technique. Dosage with Kerakoll Quartzo 1:8 by volume.



## SUBSTRATE PREPARATION

If the thickness is < 40 mm use a slurry key prepared using P5 Eco, water and Biocem in the proportion of 1:1:4.

# SYSTEM C2 TILES

## VITRIFIED TILES FIXING IN WET AREAS AND SHOWERS

- Guarantees the water protection of adjacent rooms
- Certified fixing system
- High level of chemical stability in alkaline areas
- System with very low VOC emissions, improves the quality of air and increases the level of health protection for people



**7**

**6**

**5**

**4**

**3**

**2**

**1**

## EXPANSION JOINTS

Coverage  
see coverage table  
on page 36



### Fugabella® Eco Silicone

Eco-friendly, silicone, acetic, anti-mould organic sealant with a high level of elasticity for expansion-deformation joints, ideal for use in GreenBuilding. Solvent-free, safeguards the health of both operators and the environment.



## GROUTING

Coverage  
see coverage table  
on page 36



### Fugalite® Eco

Certified, eco-friendly, vitrified, high-slide, easy-to-clean grout and adhesive, bacteriostatic and fungistatic, water and stain proof for joints of between 0 and 20 mm with a high level of chemical and mechanical resistance, guarantees the continuity of ceramic surfaces, ideal for use in GreenBuilding. With very low volatile organic compound emissions.



## VITRIFIED TILES FIXING

Coverage  
≈ 1,2 kg/m<sup>2</sup> per mm of  
thickness



### Biofix Grey

Adhesive for fixing ceramic tiles indoor and outdoor areas and vitrified tiles only indoor.



## WATERPROOFING

2<sup>nd</sup> COAT - Coverage  
≈ 1,15 kg/m<sup>2</sup> per mm of  
thickness



### Aquastop Nanoflex®

Certified, eco-friendly, breathable, anti-alkali and chlorine-resistant, mineral membrane for the flexible waterproofing with high levels of adhesion and durability of substrates before fixing with adhesives, ideal for use in GreenBuilding.

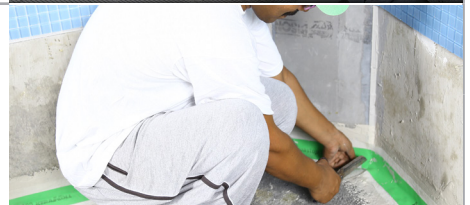


Waterproofing of joints



### Aquastop 120

Flexible NBR waterproof joint for perimeter and fractionizing joints in waterproofing systems. For use under ceramic and vitrified tiles and natural stone. Bonds directly using Aquastop Nanoflex®.



1<sup>st</sup> COAT - Coverage  
≈ 1,15 kg/m<sup>2</sup> per mm of  
thickness



### Aquastop Nanoflex®

Certified, eco-friendly, breathable, anti-alkali and chlorine-resistant, mineral membrane for the flexible waterproofing with high levels of adhesion and durability of substrates before fixing with adhesives, ideal for use in GreenBuilding.



## SUBSTRATE

Preparation of the screed  
≈ 1,6 kg/m<sup>2</sup>  
per cm of thickness



### Biocem + Quartzo

Mineral binder for screeds to fix vitrified tiles and natural stones using wet-on-wet technique. Dosage with Kerakoll Quartzo 1:6 by volume.

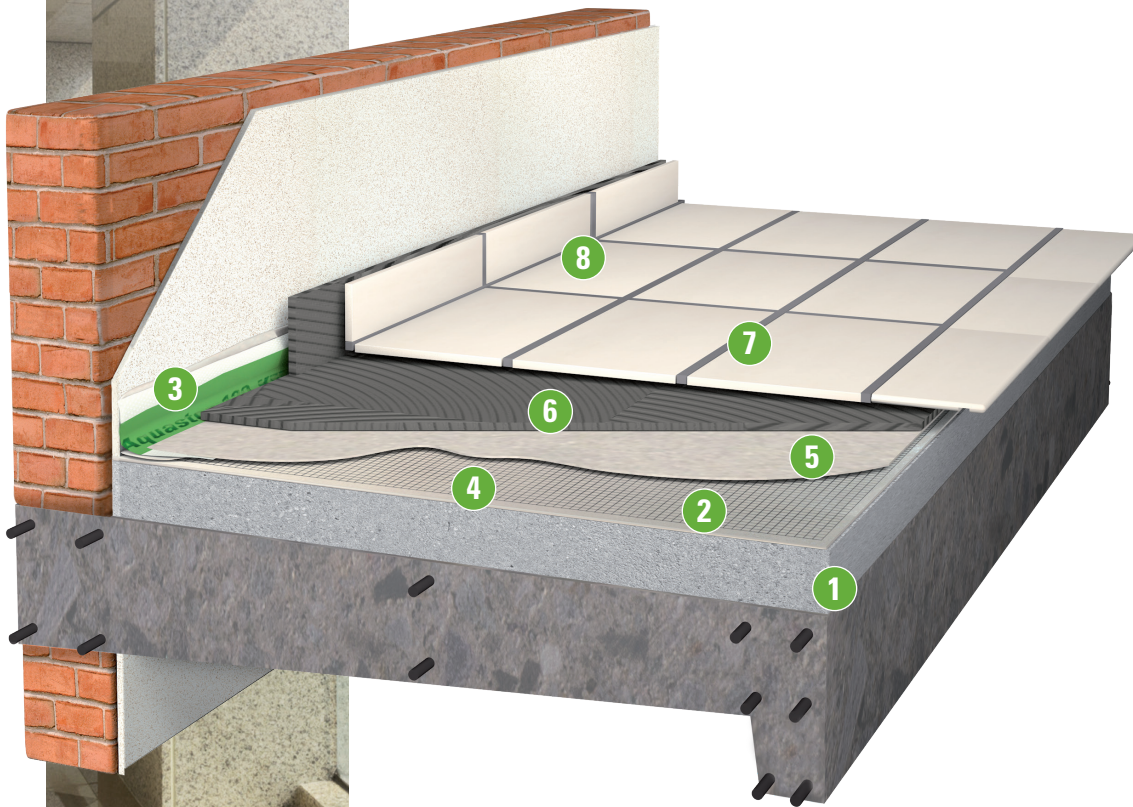


# SYSTEM C3 TILES

## VITRIFIED TILES FIXING ON TERRACES AND BALCONIES



- Guarantees safe fixing in high temperature and difficult humidity conditions
- Ensures protection of the underlying structure
- Guarantees excellent resistance to changes in temperature
- Total water resistance
- Fast completion of work
- System with very low VOC emissions, improves the quality of air and increases the level of health protection for people



8

---

7

---

6

---

5

---

4

---

3

---

2

---

1

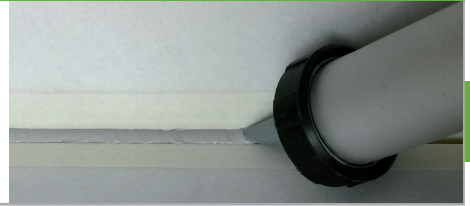
## EXPANSION JOINTS

Coverage  
see coverage table  
on page 36



### Fugabella® Eco Silicone

Eco-friendly, silicone, acetic, anti-mould organic sealant with a high level of elasticity for expansion-deformation joints, ideal for use in GreenBuilding. Solvent-free, safeguards the health of both operators and the environment.



## GROUTING

Coverage  
see coverage table  
on page 36



### Fugalite® Zero

Certified eco-friendly, easy-to-work, hypoallergenic, water-based grout, bacteriostatic and fungistatic, water and stain proof, for joints of between 0 and 10 mm with a high level of colour fastness and good chemical resistance, ideal for use in GreenBuilding.



## VITRIFIED TILES FIXING

Coverage  
≈ 1,2 kg/m<sup>2</sup> per mm of  
thickness



### Bioflex Grey

Flexible mineral adhesive to fix vitrified tiles and Natural stones on floor and wall.



## WATERPROOFING

2<sup>nd</sup> COAT - Coverage  
≈ 1,15 kg/m<sup>2</sup> per mm of  
thickness



### Aquastop Nanoflex®

Certified, eco-friendly, breathable, anti-alkali and chlorine-resistant, mineral membrane for the flexible waterproofing with high levels of adhesion and durability of substrates before fixing with adhesives, ideal for use in GreenBuilding.



Reinforcing mesh



### Aquastop AR1

Special reinforcing mesh made of alkali-resistant glass fibre to strengthen the two-component, eco-friendly Aquastop Nanoflex® membrane.



Waterproofing of joints



### Aquastop 120

Flexible NBR waterproof joint for perimeter and fractionizing joints in waterproofing systems. For use under ceramic and vitrified tiles and natural stone. Bonds directly using Aquastop Nanoflex®.



1<sup>st</sup> COAT - Coverage  
≈ 1,15 kg/m<sup>2</sup> per mm of  
thickness



### Aquastop Nanoflex®

Certified, eco-friendly, breathable, anti-alkali and chlorine-resistant, mineral membrane for the flexible waterproofing with high levels of adhesion and durability of substrates before fixing with adhesives, ideal for use in GreenBuilding.



## SUBSTRATE

Preparation of the screed  
≈ 16 kg/m<sup>2</sup>  
per cm of thickness



### Biocem + Quartzo

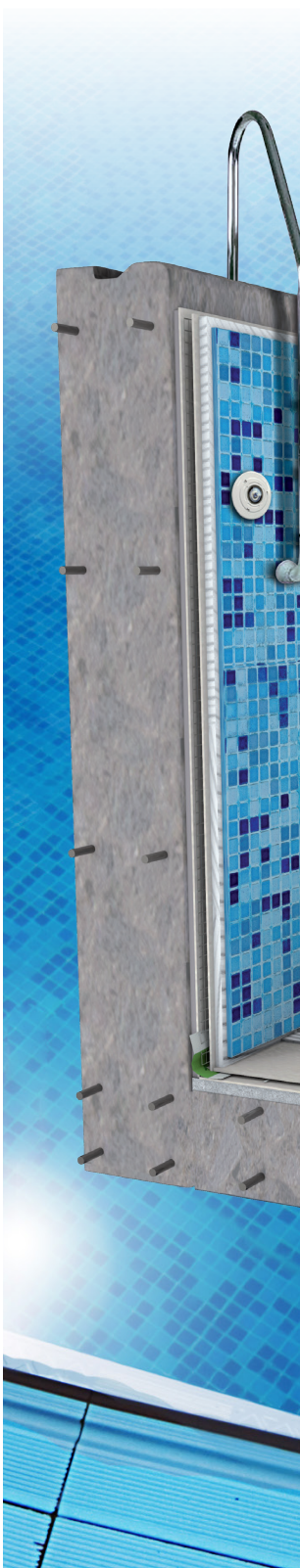
Mineral binder for screeds to fix vitrified tiles and natural stones using wet-on-wet technique. Dosage with Kerakoll Quartzo 1:6 by volume.



# SYSTEM C4 TILES

## VITRIFIED TILES AND MOSAIC FIXING IN SWIMMING POOL

- Ensures high performance even in continuous water immersion
- High resistance to chlorate water
- Maintains the hygiene of surfaces
- System with very low VOC emissions, improves the quality of air and increases the level of health protection for people



8	eco3 ECO+ Fugalite Zero
7	eco2 ECO+ BIO-FLEX KERAFOLL
6	eco3 ECO+ AQUASTOP NanoFlex KERAFOLL
5	AQUASTOP NanoFlex KERAFOLL
4	eco3 ECO+ AQUASTOP NanoFlex KERAFOLL
3	eco3 KERAFOLL
2	eco4 KERABUILD Eco R4 TIXO KERAFOLL
1	eco2 ECO+ BIOCEM KERAFOLL

## GROUTING

Coverage  
see coverage table on page  
28



### Fugalite® Zero

Certified eco-friendly, easy-to-work, hypoallergenic, water-based grout, bacteriostatic and fungistatic, water and stain proof, for joints of between 0 and 10 mm with a high level of colour fastness and good chemical resistance, ideal for use in GreenBuilding. With very low volatile organic compound emissions and reduced solvent content, safeguards the health of operators.



## VITRIFIED TILES AND MOSAIC FIXING

Coverage  
≈ 1,2 kg/m<sup>2</sup> per mm of  
thickness



### Bioflex White

Flexible mineral adhesive to fix vitrified tiles and Natural stones on floor and wall.



## WATERPROOFING

2<sup>nd</sup> COAT - Coverage  
≈ 1,15 kg/m<sup>2</sup> per mm of  
thickness



### Aquastop Nanoflex®

Certified, eco-friendly, breathable, anti-alkali and chlorine-resistant, mineral membrane for the flexible waterproofing with high levels of adhesion and durability of substrates before fixing with adhesives, ideal for use in GreenBuilding. Single-component with low CO<sub>2</sub> emissions and very low volatile organic compound emissions. Recyclable as an inert material at the end of its life.



Reinforcing mesh  
waterproofing of joints



### Aquastop AR1

Special reinforcing mesh made of alkali-resistant glass fibre to strengthen the two-component, eco-friendly Aquastop Nanoflex® membrane.

### Aquastop 120

Flexible NBR waterproof joint for perimeter and fractionizing joints in waterproofing systems. For use under ceramic and vitrified tiles and natural stone. Bonds directly using Aquastop Nanoflex®.



1<sup>st</sup> COAT - Coverage  
≈ 1,15 kg/m<sup>2</sup> per mm of  
thickness



### Aquastop Nanoflex®

Certified, eco-friendly, breathable, anti-alkali and chlorine-resistant, mineral membrane for the flexible waterproofing with high levels of adhesion and durability of substrates before fixing with adhesives, ideal for use in GreenBuilding. Single-component with low CO<sub>2</sub> emissions and very low volatile organic compound emissions. Recyclable as an inert material at the end of its life.



≈ 10 m (joint 5x5 mm) with 1  
290 ml cartridge



### Nanosil Eco

Eco-friendly neutral silane rigid sealant for waterproof sealing of hydraulic and electric systems, through elements and construction elements in pools and in AquaExpert systems, ideal for Greenbuilding.



## WALL LEVELLING

≈ 17,5 kg/m<sup>2</sup>  
per cm of thickness



### Kerabuild® Eco R4 Tixo

Eco-friendly, mineral mortar for the guaranteed, long-lasting restoration and consolidation of concrete structures, ideal for use in GreenBuilding. Recyclable as an inert material at the end of its life.



## SUBSTRATE

Preparation of the screed  
≈ 2,5 kg/m<sup>2</sup>  
per cm of thickness



### Biocem + Quartzo

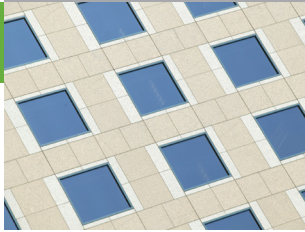
Mineral binder for screeds to fix vitrified tiles and natural stones using wet-on-wet technique. Dosage with Kerakoll Quartzo 1:4 by volume.



# SYSTEM C5 TILES

## VITRIFIED TILES FIXING ON EXTERNAL FACADES

- Guarantees safe fixing in difficult climatic and humidity conditions
- Guarantees excellent resistance to changes in temperature
- System with very low VOC emissions, improves the quality of air and increases the level of health protection for people





## EXPANSION JOINTS

Coverage  
see coverage table  
on page 36



### Fugabella® Eco AM

Eco-friendly, silicone, neutral, anti-mould organic sealant with a high level of elasticity for expansion-deformation joints, ideal for use in GreenBuilding. Solvent-free, safeguards the health of both operators and the environment.



## GROUTING

Coverage  
see coverage table  
on page 36



### Fugalite® Zero

Certified eco-friendly, easy-to-work, hypoallergenic, water-based grout, bacteriostatic and fungistatic, water and stain proof, for joints of between 0 and 10 mm with a high level of colour fastness and good chemical resistance, ideal for use in GreenBuilding. With very low volatile organic compound emissions and reduced solvent content, safeguards the health of operators.



## VITRIFIED TILES FIXING

Coverage  
≈ 1,2 kg/m<sup>2</sup> per mm of  
thickness



### H40® No Limits Grey

Highly flexible, multi-purpose, structural adhesive to fix fully vitrified tiles and natural stone of all types and size.

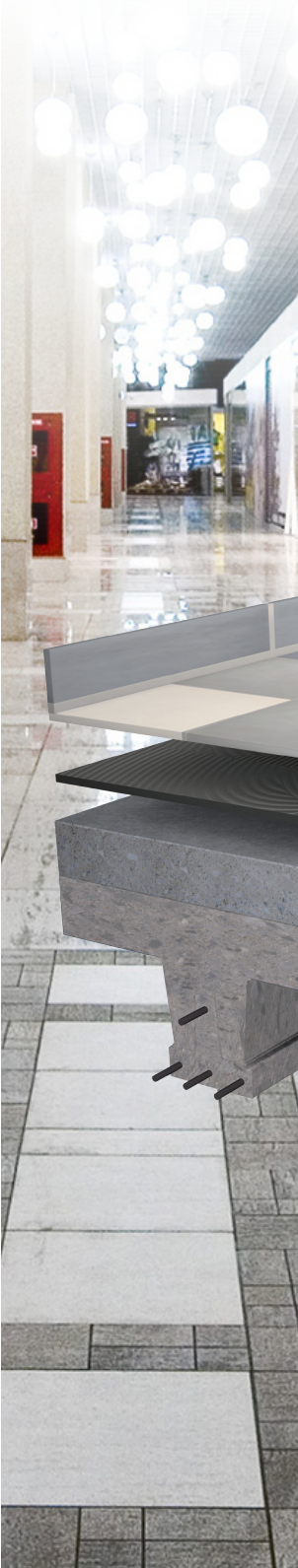


## SUBSTRATE PREPARATION

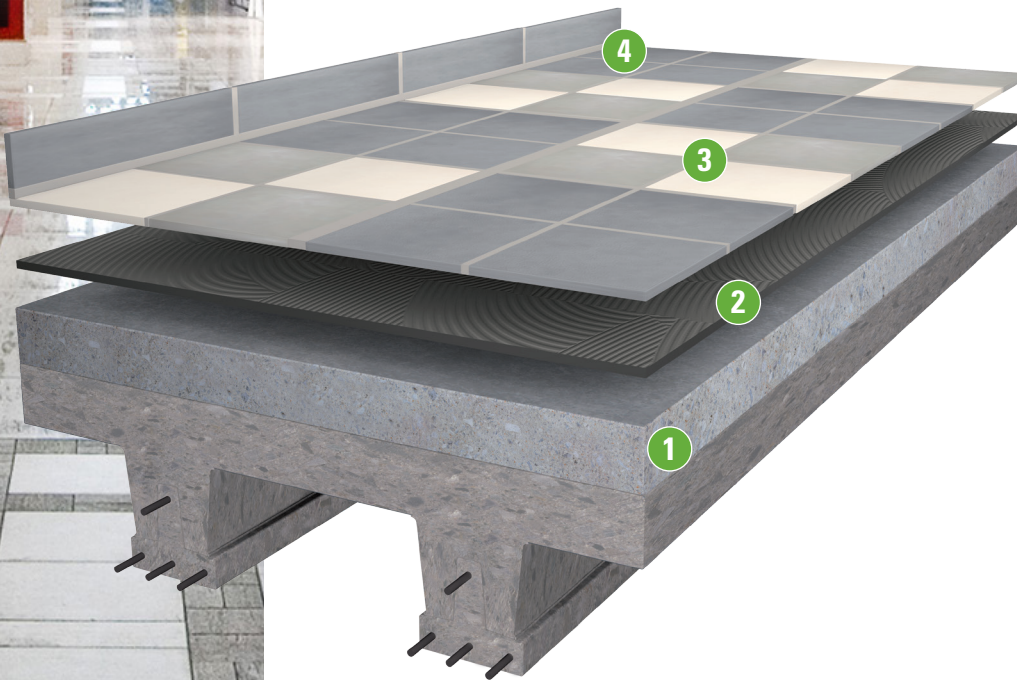
If necessary, prepare a slurry key for the plaster/render using 1 part of P5, 1 part of water and 3 parts of cement. Mix P5 additive with plaster/render to increase the cohesion. Check with Kerakoll India Helpline the fixing techniques to use according to dimensions, height and format of the slabs.

# SYSTEM C6 TILES

## VITRIFIED TILES FIXING IN AREAS WITH HEAVY TRAFFIC



- Guarantees safe fixing in areas subject to high levels of traffic
- Ensures high resistance to static and dynamic loads
- Fast completion of work
- System with very low VOC emissions, improves the quality of air and increases the level of health protection for people



## EXPANSION JOINTS

Coverage  
see coverage table  
on page 36



### Fugabella® Eco PU 40

Eco-friendly, polyurethane, non-sag organic sealant with a high level of resistance to abrasion for fractionizing joints, ideal for use in GreenBuilding. Safeguards the environment.



## GROUTING

Coverage  
see coverage table  
on page 36



### Fugalite® Eco

Certified, eco-friendly, vitrified, high-slide, easy-to-clean grout and adhesive, bacteriostatic and fungistatic, water and stain proof for joints of between 0 and 20 mm with a high level of chemical and mechanical resistance, guarantees the continuity of ceramic surfaces, ideal for use in GreenBuilding. With very low volatile organic compound emissions.



## VITRIFIED TILES FIXING

Coverage  
≈ 1,2 kg/m<sup>2</sup> per mm of  
thickness



### Bioflex Grey

Flexible mineral adhesive to fix vitrified tiles and Natural stones on floor and wall.



## SUBSTRATE

Preparation of the screed  
≈ 2,5 kg/m<sup>2</sup>  
per cm of thickness



### Biocem + Quartzo

Mineral binder for screeds to fix vitrified tiles and natural stones using wet-on-wet technique. Dosage with Kerakoll Quartzo 1:4 by volume.



# SYSTEM C7 TILES

## FIXING OF THIN AND LARGE SIZE VITRIFIED TILES



- Guarantees safe fixing of thin tiles
- Ensures high resistance to compression
- Suitable for renovation work
- Fast completion of work
- System with very low VOC emissions, improves the quality of air and increases the level of health protection for people



## EXPANSION JOINTS

Coverage  
see coverage table  
on page 36



### Fugabella® Eco Silicone

Eco-friendly, silicone, acetic, anti-mould organic sealant with a high level of elasticity for expansion-deformation joints, ideal for use in GreenBuilding. Solvent-free, safeguards the health of both operators and the environment.



## GROUTING

Coverage  
see coverage table  
on page 36



### Fugalite® Eco

Certified, eco-friendly, vitrified, high-slide, easy-to-clean grout and adhesive, bacteriostatic and fungistatic, water and stain proof for joints of between 0 and 20 mm with a high level of chemical and mechanical resistance, guarantees the continuity of ceramic surfaces, ideal for use in GreenBuilding. With very low volatile organic compound emissions.



## VITRIFIED TILES FIXING

Coverage  
≈ 1,2 kg/m<sup>2</sup> per mm of  
thickness



### H40® No Limits Grey

Highly flexible, multi-purpose, structural adhesive to fix fully vitrified tiles and natural stone of all types and size.



## SUBSTRATE

Preparation of the screed  
≈ 2,5 kg/m<sup>2</sup>  
per cm of thickness



### Biocem + Quartzo

Mineral binder for screeds to fix vitrified tiles and natural stones using wet-on-wet technique. Dosage with Kerakoll Quartzo 1:4 by volume.



# SYSTEM C8 STONE

## FIXING NATURAL INDIAN STONE WITH THE WET-ON-WET TECHNIQUE



- Guarantees safe fixing and certified mechanical resistance
- No more efflorescence
- Avoids moisture rising on the walls
- High degree of workability and maximum adhesion
- System with very low VOC emissions, improves the quality of air and increases the level of health protection for people



## EXPANSION JOINTS

Coverage  
see coverage table  
on page 36



### Fugabella® Eco AM

Eco-friendly, silicone, acetic, anti-mould organic sealant with a high level of elasticity for expansion-deformation joints, ideal for use in GreenBuilding. Solvent-free, safeguards the health of both operators and the environment.



## GROUTING

Coverage  
see coverage table  
on page 36



### Fugabella® Eco Porcelana 0-5

Certified, eco-friendly, naturally bacteriostatic and fungistatic, stabilized mineral grout containing pure natural NHL 5 lime for extremely colour-fast joints from 0 mm to 5 mm in thickness, ideal for use in GreenBuilding. Single-component with very low volatile organic compound emissions, contains recycled raw materials. Recyclable as an inert material at the end of its life.



## FIXING NATURAL STONE

Coverage  
≈ 1,2 kg/m<sup>2</sup> per mm of  
thickness



### Biotack White

Mineral slurry adhesive to fix vitrified tiles and natural stones of all types and formats on floor using the wet-on-wet technique.



## SUBSTRATE

Preparation of the screed  
≈ 1,6 kg/m<sup>2</sup>  
per cm of thickness



### Biocem + Quartzo

Mineral binder for screeds to fix vitrified tiles and natural stones using wet-on-wet technique. Dosage with Kerakoll Quartzo 1:6 by volume.



## SUBSTRATE PREPARATION

If the thickness is < 40 mm use a slurry key composed of P5, water and Biocem in the proportions of 1:1:4.

# SYSTEM C9 STONE

## NATURAL STONE FIXING ON EXTERNAL FACADES

- Guarantees a secure fixing in difficult environmental conditions
- Guarantees excellent resistance to changes in temperature
- Guarantees the fixing of large formats and high thicknesses





## EXPANSION JOINTS

Coverage  
see coverage table  
on page 36



### Fugabella® Eco AM

Sigillante organico eco-compatibile siliconico neutro antimuffa ad elevata elasticità per giunti di dilatazione-deformazione, ideale nel GreenBuilding. Esente da solventi, rispetta l'ambiente e la salute degli operatori.



## GROUTING

Coverage  
see coverage table  
on page 36



### Fugabella® Eco Porcelana 0-5

Certified, eco-friendly, naturally bacteriostatic and fungistatic, stabilized mineral grout containing pure natural NHL 5 lime for extremely colour-fast joints from 0 mm to 5 mm in thickness, ideal for use in GreenBuilding. Single-component with very low volatile organic compound emissions, contains recycled raw materials. Recyclable as an inert material at the end of its life.



## FIXING NATURAL STONE

Coverage  
≈ 1,2 kg/m<sup>2</sup> per mm of  
thickness



### H40® No Limits White

Highly flexible, multi-purpose, structural adhesive to fix fully vitrified tiles and natural stone of all types and size.



## SUBSTRATE PREPARATION

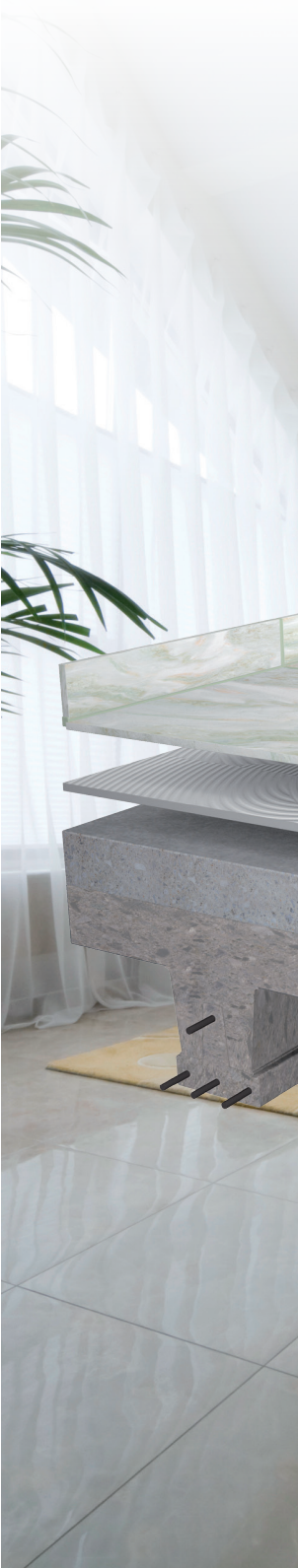
If necessary, prepare a slurry key for the plaster/render using 1 part of P5, 1 part of water and 3 parts of cement. Mix P5 additive with plaster/render to increase the cohesion. Check with Kerakoll India Helpline the fixing techniques to use according to dimensions, height and format of the slabs.

# SYSTEM C10<sup>STONE</sup>

## FIXING OF ITALIAN STONE ON FLOOR



- Guarantees a fast and secure fixing
- Guarantees uniform mechanical properties
- Ensures the evenness of the covering
- No more damp rising and stains on the surface



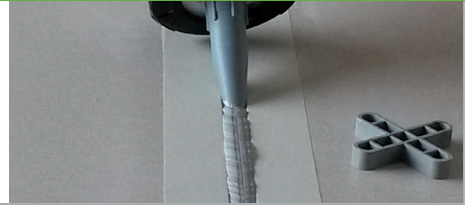
## EXPANSION JOINTS

Coverage  
see coverage table  
on page 36



### Fugabella® Eco AM

Eco-friendly, silicone, neutral, anti-mould organic sealant with a high level of elasticity for expansion-deformation joints, ideal for use in GreenBuilding. Solvent-free, safeguards the health of both operators and the environment.



## GROUTING

Coverage  
see coverage table  
on page 36



### Fugabella® Eco Porcelana 0-5

Certified, eco-friendly, naturally bacteriostatic and fungistatic, stabilized mineral grout containing pure natural NHL 5 lime for extremely colour-fast joints from 0 mm to 5 mm in thickness, ideal for use in GreenBuilding. Single-component with very low volatile organic compound emissions, contains recycled raw materials. Recyclable as an inert material at the end of its life.



## FIXING NATURAL STONE

Coverage  
≈ 1,2 kg/m<sup>2</sup> per mm of  
thickness



### Bioflex White

Flexible mineral adhesive to fix vitrified tiles and Natural stones on floor and wall.



## SUBSTRATE

Preparation of the screed  
≈ 2,5 kg/m<sup>2</sup>  
per cm of thickness



### Biocem + Quartzo

Mineral binder for screeds to fix vitrified tiles and natural stones using wet-on-wet technique. Dosage with Kerakoll Quartzo 1:4 by volume.



# Biocem

MINERAL BINDER FOR SCREEDS TO FIX VITRIFIED TILES AND NATURAL STONES USING WET-ON-WET TECHNIQUE AND AS A DRY SCREED FOR UNDERLAY APPLICATION.



Code	Pack	Pallet
95033	25 kg	1500 kg

Coverage	Shelf life
refer to Technical Data Sheet	≈ 12 months



- Prolonged workability
- Guaranteed performances

### GREENBUILDING RATING®



RATING SYSTEM ACCREDITED BY CERTIFICATION BODY SGS

# Biotack

MINERAL SLURRY ADHESIVE TO FIX VITRIFIED TILES AND NATURAL STONES OF ALL TYPES AND FORMATS ON FLOOR USING THE WET-ON-WET TECHNIQUE.



Code	Pack	Pallet
95035 Grey	25 kg	1500 kg
95034 White	25 kg	1500 kg

Coverage	Shelf life
≈ 1,2 kg/m <sup>2</sup> per mm of thickness	≈ 12 months



- Full coverage
- Ensured adhesion

### GREENBUILDING RATING®



RATING SYSTEM ACCREDITED BY CERTIFICATION BODY SGS

# Biotile

ADHESIVE FOR FIXING CERAMIC TILES INDOOR AND OUTDOOR AREAS.



Code	Pack	Pallet
95036 Grey	25 kg	1500 kg

Coverage	Shelf life
≈ 1,2 kg/m <sup>2</sup> per mm of thickness	≈ 12 months



- Thicknesses up to 10 mm
- No sag
- Prolonged workability

### GREENBUILDING RATING®



RATING SYSTEM ACCREDITED BY CERTIFICATION BODY SGS

# Biofix

ADHESIVE FOR FIXING CERAMIC TILES INDOOR AND OUTDOOR AREAS AND VITRIFIED TILES ONLY INDOOR.



Code	Pack	Pallet
95037 Grey	25 kg	1500 kg
95055 White	25 kg	1500 kg

Coverage	Shelf life
≈ 1,2 kg/m <sup>2</sup> per mm of thickness	≈ 12 months



- Ideal for walls
- Thicknesses up to 15 mm
- Ideal for wet areas

### GREENBUILDING RATING®



RATING SYSTEM ACCREDITED BY CERTIFICATION BODY SGS

# Bioflex

FLEXIBLE MINERAL ADHESIVE TO FIX VITRIFIED TILES AND NATURAL STONES ON FLOOR AND WALL.



Code	Pack	Pallet
95038 Grey	25 kg	1500 kg
95039 White	25 kg	1500 kg

Coverage	Shelf life
Grey ≈ 1,3 kg/m <sup>2</sup> per mm of thickness	≈ 12 months
White ≈ 1,2 kg/m <sup>2</sup> per mm of thickness	



- Thicknesses up to 15 mm
- For internal and external use
- For balconies and terraces

### GREENBUILDING RATING®



RATING SYSTEM ACCREDITED BY CERTIFICATION BODY SGS

# H40® No Limits

HIGHLY FLEXIBLE, MULTI-PURPOSE, STRUCTURAL ADHESIVE TO FIX FULLY VITRIFIED TILES AND NATURAL STONE OF ALL TYPES AND SIZE.



Code	Pack	Pallet
95040 Grey	25 kg	1500 kg
95041 White	25 kg	1500 kg

Coverage	Shelf life
Grey ≈ 1,3 kg/m <sup>2</sup> per mm of thickness	≈ 12 months
White ≈ 1,2 kg/m <sup>2</sup> per mm of thickness	



- Long open time
- No sag
- Water resistant

### GREENBUILDING RATING®



RATING SYSTEM ACCREDITED BY CERTIFICATION BODY SGS

# Aquastop Nanoflex®

Certified, eco-friendly, breathable, anti-alkali and chlorine-resistant, mineral membrane for the flexible waterproofing with high levels of adhesion and durability of substrates before laying with adhesives, ideal for use in GreenBuilding.

Aquastop Nanoflex® develops a smooth, fluid mixture that can be adjusted by varying the amount of water in order to obtain optimal workability for the particular site conditions, guaranteeing maximum adhesion of the bonded system.



Code	Pack	Pallet
01107	20 kg	1200 kg

Coverage	Shelf life
≈ 1,15 kg/m <sup>2</sup> per mm of thickness	≈ 12 months



- Single-component
- Completely water repellent, gives permanent elasticity and high chemical stability
- 30% better coverage

## GREENBUILDING RATING®



RATING SYSTEM ACCREDITED BY CERTIFICATION BODY SGS

# Aquastop AR1

Special reinforcing mesh made of alkali-resistant glass fibre to strengthen the eco-friendly Aquastop Nanoflex® membrane.



- Superior mesh with Aquastop Nanoflex®
- Without memory effect

Code	Pack	Pallet
05009	50 m	24 rolls

# Aquastop 120

Flexible NBR waterproof joint for perimeter and fractionizing joints in waterproofing systems. For use under ceramic and vitrified tiles and natural stone. Bonds directly using Aquastop Nanoflex®.



- Ideal for bonding with eco-friendly Aquastop Nanoflex® Eco membrane
- Guaranteed waterproofing of all types of non-structural fractionizing and connection joints

Code	Pack	Code	Pack
05948	Tape 120 width 50 m	05949	Flange 120x120 20 pcs.
05946	Internal corner 20 pcs.	05950	Flange 350x350 10 pcs.
05944	External corner 20 pcs.		

# Nanosil Eco

Eco-friendly rigid neutral silane sealant for waterproof sealing of hydraulic and electric systems, through elements and construction elements in pools and in AquaExpert systems, ideal for GreenBuilding.

Nanosil Eco develops a high level of adhesion and permanent elasticity on absorbent and non-absorbent surfaces, guaranteeing the waterproofing of system passages even in the most critical space situations.

Code	Pack	Pallet
05970	12x290 ml	936 pcs.

Coverage	Shelf life
≈ 10 m (joint 5x5 mm) with 1 cartridge (290 ml)	≈ 18 months



- Specific for pools with aggressive water
- High adhesion on all materials without using primer

**GREENBUILDING RATING®**

RATING SYSTEM ACCREDITED BY CERTIFICATION BODY SGS

# Kerabuild® Eco R4 Tixo

Eco-friendly, mineral mortar for the guaranteed, long-lasting restoration and consolidation of concrete structures, ideal for use in GreenBuilding.

Kerabuild® Eco R4 Tixo is a polymer-modified, thixotropic, fibre-reinforced, with compensated shrinkage and Zero Crack Risk mortar, that complies with the performance requirements of EN 1504-3 for class R4 structural mortars of type CC and PCC.



Code	Pack	Pallet
03811	25 kg	1500 kg

Coverage	Shelf life
≈ 17,5 kg/m <sup>2</sup> per cm of thickness	≈ 12 months



- Excellent workability and ease-of-application

**GREENBUILDING RATING®**

RATING SYSTEM ACCREDITED BY CERTIFICATION BODY SGS

# P5 Eco

Eco-friendly, water-based elastomeric latex for use as a high-performance additive in cement-based mortars and fine-grain concretes, ideal for use in GreenBuilding.

P5 Eco increases substrate adhesion, reduces water absorption and enhances the level of compactness and flexibility. For slurry keys used in additional casting layers and in restoration work. Internal, external.



Code	Pack	Pallet
02361	25 kg	600 kg
02362	5 kg	450 kg

Dosages	Shelf life
concrete ≈ 20 – 40% of the weight of cement	≈ 12 months
mortar ≈ 20 – 40% of the weight of cement	
adhesive slurry ≈ 1 P5 Eco : 1 water : 4 cement	



- As an additive for mortars, fine and standard-grain concrete and adhesive slurries

**GREENBUILDING RATING®**

RATING SYSTEM ACCREDITED BY CERTIFICATION BODY SGS

# Fugabella® Eco Porcelana 0-5

Certified, eco-friendly, naturally bacteriostatic and fungistatic, stabilized mineral grout containing pure natural NHL 5 lime for extremely colour-fast joints from 0 mm to 5 mm in thickness, ideal for use in GreenBuilding.

Fugabella® Eco Porcelana 0-5 develops an extra-fine, micro grain finish with scratch-proof surface hardness which enhances the reflected light effect ensuring it blends seamlessly with the design of ceramic tiles, glass mosaic and natural stone.



Code	Pack	Pallet
see pages 34-37 Codes and Colours		

Coverage	Shelf life
see coverage table on page 36	≈ 12 months



- Three collections of 28 colours: Classic, Design and Colors
- Ideal for decorating corrected slab

## GREENBUILDING RATING®



# Fugalite® Eco

Certified, eco-friendly, vitrified, high-slide, easy-to-clean grout and adhesive, bacteriostatic and fungistatic, water and stain proof for joints of between 0 and 20 mm with a high level of chemical and mechanical resistance, guarantees the continuity of ceramic surfaces, ideal for use in GreenBuilding.

Fugalite® Eco is a liquid ceramic for the smooth, unbroken grouting of all ceramic and glass mosaic coverings. Available in 3 colour collections giving a total of 28 different colours and allowing unlimited creative potential and original combinations as well as a striking finish.



Code	Pack	Pallet
see pages 34-37 Codes and Colours		

Coverage	Shelf life
as an adhesive ≈ 2 – 4 kg/m <sup>2</sup>	≈ 24 months
as a grout see coverage table on page 36	



- Vitrified, guarantees the lasting performance of ceramics and a totally even colour
- Ideal to bond and grout glass mosaic

## GREENBUILDING RATING®



# Fugalite® Zero

Certified eco-friendly, easy-to-work, hypoallergenic, water-based grout, bacteriostatic and fungistatic, water and stain proof, for joints of between 0 and 10 mm with a high level of colour fastness and good chemical resistance, ideal for use in GreenBuilding. With very low volatile organic compound emissions and reduced solvent content, safeguards the health of operators.

Fugalite® Zero means 100% safe and hygienic joints when grouting all ceramic and glass mosaic coverings. Available in 3 collections: Classic, Design and Colors in a total of 28 different colours, allowing unlimited creative potential and original combinations as well as a striking finish.



Code	Pack	Pallet
see pages 34-37 Codes and Colours		

Coverage	Shelf life
see coverage table on page 36	≈ 12 months



- Suitable for vitrified tiles, ceramic tiles, large formats, low thickness slabs, glass mosaic, marble and natural stone

## GREENBUILDING RATING®





# Fugabella® Eco Silicone

**Eco-friendly, silicone, acetic, anti-mould organic sealant with a high level of elasticity for expansion-deformation joints, ideal for use in GreenBuilding.**

Fugabella® Eco Silicone develops a high degree of adhesion to non-absorbent surfaces, guaranteeing the integrity and watertightness of ceramic coverings subject to deformation.



Code	Pack	Pallet
see pages 34-37 Codes and Colours		

Coverage	Shelf life
≈ 3 m (joint 10x10 mm) with 1 cartridge (310 ml)	≈ 18 months



- Available in the 28-colour Fugabella® Eco range + Transparent
- Suitable to seal vitrified and ceramic tiles

## GREENBUILDING RATING®



# Fugabella® Eco AM

**Eco-friendly, silicone, neutral, anti-mould organic sealant with a high level of elasticity for expansion-deformation joints, ideal for use in GreenBuilding.**

Fugabella® Eco AM develops neutral reticulation with no unstable, migrant components guaranteeing a perfect seal with no streaking or stains on the delicate surfaces of marble and natural stone.



Code	Pack	Pallet
see pages 34-37 Codes and Colours		

Coverage	Shelf life
≈ 3 m (joint 10x10 mm) with 1 cartridge (310 ml)	≈ 18 months



- Suitable on cement-based and porous material substrates
- Ideal for marble and natural stone

## GREENBUILDING RATING®



# Fugabella® Eco PU 40

**Eco-friendly, polyurethane, thixotropic organic sealant with a high level of resistance to abrasion for expansion-deformation joints, ideal for use in GreenBuilding.**

Fugabella® Eco PU 40 develops high surface hardness, guaranteeing the watertightness of seals under the most extreme levels of thermal and mechanical stress in industrial and commercial flooring subject to heavy traffic. High elastic modulus.



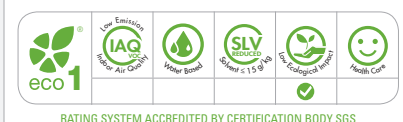
Code	Pack	Pallet
50025 03 - Pearl Grey	12x310 ml	936 pcs.
50023 04 - Iron Grey	12x310 ml	936 pcs.
50019 05 - Anthracite	12x310 ml	936 pcs.
50021 08 - Bahama Beige	12x310 ml	936 pcs.

Coverage	Shelf life
≈ 3 m (joint 10x10 mm) with 1 cartridge (310 ml)	≈ 12 months



- Walls and floors, for internal and external use, suitable for painting
- Suitable for vitrified and ceramic tiles

## GREENBUILDING RATING®



Code	Pack	Pallet
<b>Fugabella® Eco Porcelana 0-5</b>		
95003 01 - White	1 kg	
03896 01 - White	4x5 kg	480 kg
95004 02 - Light Grey	1 kg	
03902 02 - Light Grey	4x5 kg	480 kg
95005 03 - Pearl Grey	1 kg	
03890 03 - Pearl Grey	4x5 kg	480 kg
95001 04 - Iron Grey	1 kg	
03889 04 - Iron Grey	4x5 kg	480 kg
95000 05 - Anthracite	1 kg	
03884 05 - Anthracite	4x5 kg	480 kg
95006 06 - Black	1 kg	
03917 06 - Black	4x5 kg	480 kg
95002 07 - Jasmin	1 kg	
03891 07 - Jasmin	4x5 kg	480 kg
95007 08 - Bahama Beige	1 kg	
03885 08 - Bahama Beige	4x5 kg	480 kg
95008 09 - Caramel	1 kg	
03886 09 - Caramel	4x5 kg	480 kg
95009 10 - Terracotta	1 kg	
03933 10 - Terracotta	4x5 kg	480 kg
95010 11 - Brown	1 kg	
03909 11 - Brown	4x5 kg	480 kg
95011 12 - Walnut	1 kg	
03919 12 - Walnut	4x5 kg	480 kg
95012 51 - Silver	1 kg	
03929 51 - Silver	4x5 kg	480 kg
95013 50 - Pergamon	1 kg	
03925 50 - Pergamon	4x5 kg	480 kg
95014 46 - Ivory	1 kg	
03894 46 - Ivory	4x5 kg	480 kg
95015 45 - Limestone	1 kg	
03906 45 - Limestone	4x5 kg	480 kg
95016 52 - Dove Grey	1 kg	
03908 52 - Dove Grey	4x5 kg	480 kg
95017 44 - Cement Grey	1 kg	
03898 44 - Cement Grey	4x5 kg	480 kg
95018 48 - Coffee	1 kg	
03914 48 - Coffee	4x5 kg	480 kg
95019 38 - Husky	1 kg	
03904 38 - Husky	4x5 kg	480 kg
95020 47 - Mediterranean	1 kg	
03912 47 - Mediterranean	4x5 kg	480 kg
95021 15 - Ocean	1 kg	
03923 15 - Ocean	4x5 kg	480 kg
95022 41 - Eucalyptus	1 kg	
03888 41 - Eucalyptus	4x5 kg	480 kg
95023 49 - Moss	1 kg	
03916 49 - Moss	4x5 kg	480 kg
95024 20 - Magnolia	1 kg	
03892 20 - Magnolia	4x5 kg	480 kg
95026 27 - Sunset	1 kg	
03932 27 - Sunset	4x5 kg	480 kg
95027 21 - Red	1 kg	
03927 21 - Red	4x5 kg	480 kg
95028 23 - Yellow	1 kg	
03900 23 - Yellow	4x5 kg	480 kg

Code	Pack	Pallet
<b>Fugalite® Eco</b>		
05025 01 - White	Part A + B (monopack) 1x2,82 + 1x0,18 kg	240 kg
05103 02 - Light Grey	Part A + B (monopack) 1x2,82 + 1x0,18 kg	240 kg
04993 03 - Pearl Grey	Part A + B (monopack) 1x2,82 + 1x0,18 kg	240 kg
05104 04 - Iron Grey	Part A + B (monopack) 1x2,82 + 1x0,18 kg	240 kg
04995 05 - Anthracite	Part A + B (monopack) 1x2,82 + 1x0,18 kg	240 kg
05105 06 - Black	Part A + B (monopack) 1x2,82 + 1x0,18 kg	240 kg
04730 07 - Jasmin	Part A + B (monopack) 1x2,82 + 1x0,18 kg	240 kg
04731 08 - Bahama Beige	Part A + B (monopack) 1x2,82 + 1x0,18 kg	240 kg
05106 09 - Caramel	Part A + B (monopack) 1x2,82 + 1x0,18 kg	240 kg
05107 10 - Terracotta	Part A + B (monopack) 1x2,82 + 1x0,18 kg	240 kg
05108 11 - Brown	Part A + B (monopack) 1x2,82 + 1x0,18 kg	240 kg
05109 12 - Walnut	Part A + B (monopack) 1x2,82 + 1x0,18 kg	240 kg
05110 51 - Silver	Part A + B (monopack) 1x2,82 + 1x0,18 kg	240 kg
05111 50 - Pergamon	Part A + B (monopack) 1x2,82 + 1x0,18 kg	240 kg
05112 46 - Ivory	Part A + B (monopack) 1x2,82 + 1x0,18 kg	240 kg
05113 45 - Limestone	Part A + B (monopack) 1x2,82 + 1x0,18 kg	240 kg
05114 52 - Dove Grey	Part A + B (monopack) 1x2,82 + 1x0,18 kg	240 kg
05115 44 - Cement Grey	Part A + B (monopack) 1x2,82 + 1x0,18 kg	240 kg
05116 48 - Coffee	Part A + B (monopack) 1x2,82 + 1x0,18 kg	240 kg
05117 38 - Husky	Part A + B (monopack) 1x2,82 + 1x0,18 kg	240 kg
05118 47 - Mediterranean	Part A + B (monopack) 1x2,82 + 1x0,18 kg	240 kg
05119 15 - Ocean	Part A + B (monopack) 1x2,82 + 1x0,18 kg	240 kg
05120 41 - Eucalyptus	Part A + B (monopack) 1x2,82 + 1x0,18 kg	240 kg
05121 49 - Moss	Part A + B (monopack) 1x2,82 + 1x0,18 kg	240 kg
05122 20 - Magnolia	Part A + B (monopack) 1x2,82 + 1x0,18 kg	240 kg
05123 27 - Sunset	Part A + B (monopack) 1x2,82 + 1x0,18 kg	240 kg
05124 21 - Red	Part A + B (monopack) 1x2,82 + 1x0,18 kg	240 kg
05125 23 - Yellow	Part A + B (monopack) 1x2,82 + 1x0,18 kg	240 kg
05319 Extra-fine white	Part A + B (monopack) 1x2,82 + 1x0,18 kg	240 kg
<b>Fugalite® Zero</b>		
07138 01 - White	Part A + B (monopack) 1x2,4 + 1x1,2 kg	316,8 kg
07142 03 - Pearl Grey	Part A + B (monopack) 1x2,4 + 1x1,2 kg	316,8 kg
07144 04 - Iron Grey	Part A + B (monopack) 1x2,4 + 1x1,2 kg	316,8 kg
07148 05 - Anthracite	Part A + B (monopack) 1x2,4 + 1x1,2 kg	316,8 kg
08387 06 - Black	Part A + B (monopack) 1x2,4 + 1x1,2 kg	316,8 kg
07146 07 - Jasmin	Part A + B (monopack) 1x2,4 + 1x1,2 kg	316,8 kg
08348 08 - Bahama Beige	Part A + B (monopack) 1x2,4 + 1x1,2 kg	316,8 kg
08856 12 - Walnut	Part A + B (monopack) 1x2,4 + 1x1,2 kg	316,8 kg
08989 51 - Silver	Part A + B (monopack) 1x2,4 + 1x1,2 kg	316,8 kg
08987 46 - Ivory	Part A + B (monopack) 1x2,4 + 1x1,2 kg	316,8 kg
07150 45 - Limestone	Part A + B (monopack) 1x2,4 + 1x1,2 kg	316,8 kg
08394 48 - Coffee	Part A + B (monopack) 1x2,4 + 1x1,2 kg	316,8 kg
08988 15 - Ocean	Part A + B (monopack) 1x2,4 + 1x1,2 kg	316,8 kg

Code		Pack	Pallet
<b>Fugabella® Eco Silicone</b>			
03618	Transparent	12x310 ml	864 pcs.
03571	01 - White	12x310 ml	864 pcs.
03573	02 - Light Grey	12x310 ml	864 pcs.
03170	03 - Pearl Grey	12x310 ml	864 pcs.
03175	04 - Iron Grey	12x310 ml	864 pcs.
03177	05 - Anthracite	12x310 ml	864 pcs.
03575	06 - Black	12x310 ml	864 pcs.
03563	07 - Jasmin	12x310 ml	864 pcs.
03180	08 - Bahama Beige	12x310 ml	864 pcs.
03561	09 - Caramel	12x310 ml	864 pcs.
03569	10 - Terracotta	12x310 ml	864 pcs.
03567	11 - Brown	12x310 ml	864 pcs.
03185	12 - Walnut	12x310 ml	864 pcs.
03595	51 - Silver	6x310 ml	432 pcs.
03603	50 - Pergamon	6x310 ml	432 pcs.
03587	46 - Ivory	6x310 ml	432 pcs.
03179	45 - Limestone	6x310 ml	432 pcs.
03577	52 - Dove Grey	6x310 ml	432 pcs.
03178	44 - Cement Grey	6x310 ml	432 pcs.
03583	48 - Coffee	6x310 ml	432 pcs.
03579	38 - Husky	6x310 ml	432 pcs.
03601	47 - Mediterranean	6x310 ml	432 pcs.
03593	15 - Ocean	6x310 ml	432 pcs.
03589	41 - Eucalyptus	6x310 ml	432 pcs.
03591	49 - Moss	6x310 ml	432 pcs.
03581	20 - Magnolia	6x310 ml	432 pcs.
03605	27 - Sunset	6x310 ml	432 pcs.
03585	21 - Red	6x310 ml	432 pcs.
03597	23 - Yellow	6x310 ml	432 pcs.
<b>Fugabella® Eco AM</b>			
03607	01 - White	12x310 ml	936 pcs.
03609	03 - Pearl Grey	12x310 ml	936 pcs.
03611	04 - Iron Grey	12x310 ml	936 pcs.
03613	05 - Anthracite	12x310 ml	936 pcs.
03615	07 - Jasmin	12x310 ml	936 pcs.
03617	08 - Bahama Beige	12x310 ml	936 pcs.

# COVERAGE TABLES

MINERAL GROUTS			
grammes/m <sup>2</sup> - joint width 1 mm			
	Format	Thickness	<b>FUGABELLA® ECO PORCELANA 0-5</b>
Mosaic	25x25 mm	3 mm	≈ 430
	50x50 mm	4 mm	≈ 295
Natural stone Glazed tiles Ceramic tiles Vitrified tiles	100x100 mm	6 mm	≈ 220
	100x150 mm	6 mm	≈ 185
	200x100 mm	6 mm	≈ 165
	300x300 mm	7 mm	≈ 90
	300x450 mm	9 mm	≈ 95
	300x600 mm	9 mm	≈ 85
	600x600 mm	10 mm	≈ 65
	1000x1000 mm	12 mm	≈ 45
	1200x600 mm	16 mm	≈ 75
	1800x900 mm	25 mm	≈ 80
1800x1200 mm	25 mm	≈ 65	

ORGANIC MINERAL GROUTS				
grammes/m <sup>2</sup> - joint width 1 mm				
	Format	Thickness	<b>FUGALITE® ECO</b>	<b>FUGALITE® ZERO</b>
Mosaic	25x25 mm	3 mm	≈ 395	≈ 420
	50x50 mm	4 mm	≈ 270	≈ 280
Natural stone Glazed tiles Ceramic tiles Vitrified tiles	100x100 mm	6 mm	≈ 205	≈ 215
	100x150 mm	6 mm	≈ 170	≈ 180
	200x100 mm	6 mm	≈ 155	≈ 160
	300x300 mm	7 mm	≈ 80	≈ 85
	300x450 mm	9 mm	≈ 85	≈ 90
	300x600 mm	9 mm	≈ 80	≈ 80
	600x600 mm	10 mm	≈ 60	≈ 60
	1000x1000 mm	12 mm	≈ 40	≈ 45
	1200x600 mm	16 mm	≈ 70	≈ 70
	1800x900 mm	25 mm	≈ 70	≈ 75
1800x1200 mm	25 mm	≈ 60	≈ 60	

ORGANIC SEALANTS						
Linear metres of joints sealable with one 310 ml cartridge of <b>Fugabella® Eco Silicone</b> , <b>Fugabella® Eco PU 40</b> or <b>Fugabella® Eco AM</b>						
Depth	Width	6 mm	8 mm	10 mm	15 mm	20 mm
5 mm		≈ 10,4 m	≈ 8 m	≈ 6,2 m	–	–
7 mm		–	≈ 5,6 m	≈ 4,4 m	≈ 3 m	–
10 mm		–	–	≈ 3 m	≈ 2,1 m	≈ 1,6 m
15 mm		–	–	–	≈ 1,4 m	≈ 1,1 m
20 mm		–	–	–	≈ 1,1 m	≈ 0,8 m

If an estimated coverage value has not been given, it means the joint width/depth ratio is outside the specified limits and the joint cannot be sealed.

# COLOUR CHART FOR GROUTS AND SEALANTS

Classic Collection

Design Collection

Colors Collection

	Fugabella® Eco Porcelana 0-5	Fugalite® Eco	Fugalite® Zero	Fugabella® Eco Silicone	Fugabella® Eco AM	Fugabella® Eco PU 40	Fugabella® Eco PU
01 White	●	●	●	●	●		●
02 Light Grey	●	●	●	●			
03 Pearl Grey	●	●	●	●	●	●	●
04 Iron Grey	●	●	●	●	●	●	
05 Anthracite	●	●	●	●	●	●	
06 Black	●	●	●	●	●	●	●
07 Jasmin	●	●	●	●	●		
08 Bahama Beige	●	●	●	●	●	●	●
09 Caramel	●	●		●			
10 Terracotta	●	●		●			
11 Brown	●	●		●			
12 Walnut	●	●	●	●			
51 Silver	●	●	●	●			
50 Pergamon	●	●		●			
46 Ivory	●	●	●	●			
45 Limestone	●	●	●	●			
52 Dove Grey	●	●		●			
44 Cement Grey	●	●		●			
48 Coffee	●	●	●	●			
38 Husky	●	●		●			
47 Mediterranean	●	●		●			
15 Ocean	●	●	●	●			
41 Eucalyptus	●	●		●			
49 Moss	●	●		●			
20 Magnolia	●	●		●			
27 Sunset	●	●		●			
21 Red	●	●		●			
23 Yellow	●	●		●			
Extra-fine white		●					

Colour Fastness* GS <sub>C</sub> (Daylight) - Fugabella® Eco	Colour Fastness* GS <sub>C</sub> (Daylight) - Fugalite® Eco	Colour Fastness* GS <sub>C</sub> (Daylight) - Fugalite® Zero
Standard EN ISO 105-A05	Standard EN ISO 105-A05	Standard EN ISO 105-A05
5	1,5	3
4,5	1	3
4,5	1	3
4,5	1,5	3
4	2	4
3,5	2,5	4,5
4,5	1	3,5
4,5	1	4
4,5	1,5	4,5
4,5	2	4
4	2,5	4,5
4	2,5	4,5
4,5	1,5	3,5
4,5	1,5	3
4,5	1	3
4,5	1	3,5
4,5	1,5	4
4,5	1	3,5
3,5	2,5	4,5
3	1	3
3	1	3
3	1	3
5	1,5	3,5
5	2	4,5
4,5	1,5	3
4,5	1,5	4,5
4	4	5
2	1	2
	1	

Legend from 5 to 4 high colour fastness; for internal and external use from 3,5 to 3 good colour fastness; for internal and external use from 2,5 to 1 limited colour fastness; for internal use

\* Samples were exposed for 500 hours to a light spectrum equivalent to natural sunlight at midday, at the height of the summer on the earth's surface in the northern hemisphere. Differences in clarity, saturation and hue as compared to the reference sample kept in the dark in standard conditions are measured.

The resulting colour difference  $\Delta E_c$  is used to calculate the grey scale intensity values for colour fastness (GS<sub>C</sub>), expressed in a range from 5 (maximum fastness) to 1. Important: the human eye cannot distinguish colour differences in the 5 to 3 range.



This Technical Guide has been drafted on the basis of the best technical and practical knowledge of Kerakoll S.p.A.

It is, however, a set of guides and information of a general nature that do not consider the real situations of individual structures.

Kerakoll does not intervene directly in the building site conditions, the specific design of the project, and the execution of the work; the information and guidelines mentioned here do not commit Kerakoll in any way.

The designer in charge is responsible for the entire structural design in accordance with Italian Ministerial Decree 14/01/2008 and its amendments or additions.

The Eco and Bio classifications refer to the GreenBuilding Rating® Manual 2012 (ref. GBR Data Report 02.15). All rights reserved. © Kerakoll. All rights to the content of this publication are reserved in accordance with applicable law.

The duplication, publication, and distribution, in full or in part, of all material contained herein, are expressly forbidden without written authorization. Additions and/or amendments to this information may be made over time by KERAKOLL Spa; for the latest version, see [www.kerakoll.com](http://www.kerakoll.com).

KERAKOLL Spa shall therefore be liable for the validity, accuracy and updating of information provided only when taken directly from its institutional website. For information on the product safety data, refer to the corresponding sheets provided in accordance with the law along with the health labelling on the packaging.

Finally, it is advisable to perform a preliminary test of each product to verify its suitability for your purposes.

## TECHNICAL GUIDE FOR THE BUILDING SITE



**KERAKOLL**  
The GreenBuilding Company

[www.kerakoll.com](http://www.kerakoll.com)

**KERAKOLL Spa**

M/S. Kerakoll India Pvt. Ltd. Office No. 202, A-Wing, Business Square Solitaire Park, Opp Apple Heritage, Andheri Kurla Road,  
Chakala Andheri (E), Mumbai-400 093, Maharashtra, India.  
Kerakoll India Helpline (Toll Free) 1800-200-6550 - [info@kerakollindia.com](mailto:info@kerakollindia.com)

TILES & STONE

**C**

SYSTEMS